

RAN^oOX

RX series
Precision. Reliability. Accuracy.

RX **altona**

» Transforming semi-automated diagnostics through
bold design and ground-breaking technology

theRXseries.com





RX altona



01 INTRODUCTIONS

03 SOFTWARE


05 SUPERIOR PERFORMANCE

07 EFFICIENCY

09 FLEXIBILITY

10 SPECIFICATIONS

11 TEST MENU



“Shining a new light on
semi-automated clinical
chemistry testing with
bold design and ground-
breaking technology”



Select Test Action 24.9 °C 01 Jan 2016 12:51:02

Rox Sample Rox Calibration New Test Parameters

RANDOX

RX altona

RX altona



»» THE RX ALTONA

SUPERIOR PERFORMANCE

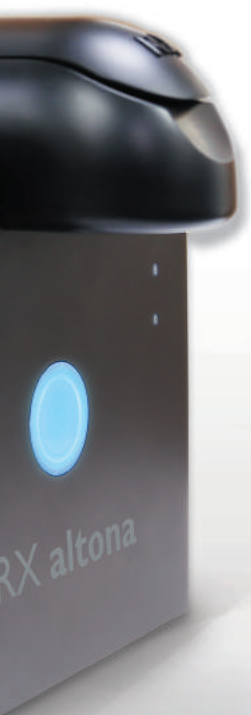
The RX altona shines a new light on semi-automated clinical chemistry testing with increased auto-functionality and ground-breaking technology. Revolutionising the RX series with its bold look, innovative design, and outstanding performance, it sets the benchmark for the next generation of RX series clinical chemistry analysers.

The RX altona has been developed with the user in mind by incorporating a responsive touch-screen display. The sleek ergonomic design boasts intuitive user-friendly software allowing for test menu personalisation for ease of use.

Personal customisation combined with the world leading RX series test menu guarantees complete patient profiling and astonishing functionality. Increased automatic features guarantee precision, reliability and accuracy for results you can trust.

The RX altona provides exciting opportunities for consolidation of routine & specialised testing and is perfectly suited to a variety of laboratory types as a primary or a backup analyser. These include;

- Clinical laboratories
- Specialised clinics
- Research & educational laboratories
- Veterinary laboratories
- Food and wine testing



>> SOFTWARE

TECHNOLOGY AT THE HEART OF YOUR LABORATORY



Advanced built in QC software automatically displays reaction curves, calibration curves & Levey Jennings charts



Advanced password protection function for QC result inclusion/exclusion, analyser setup & assay management



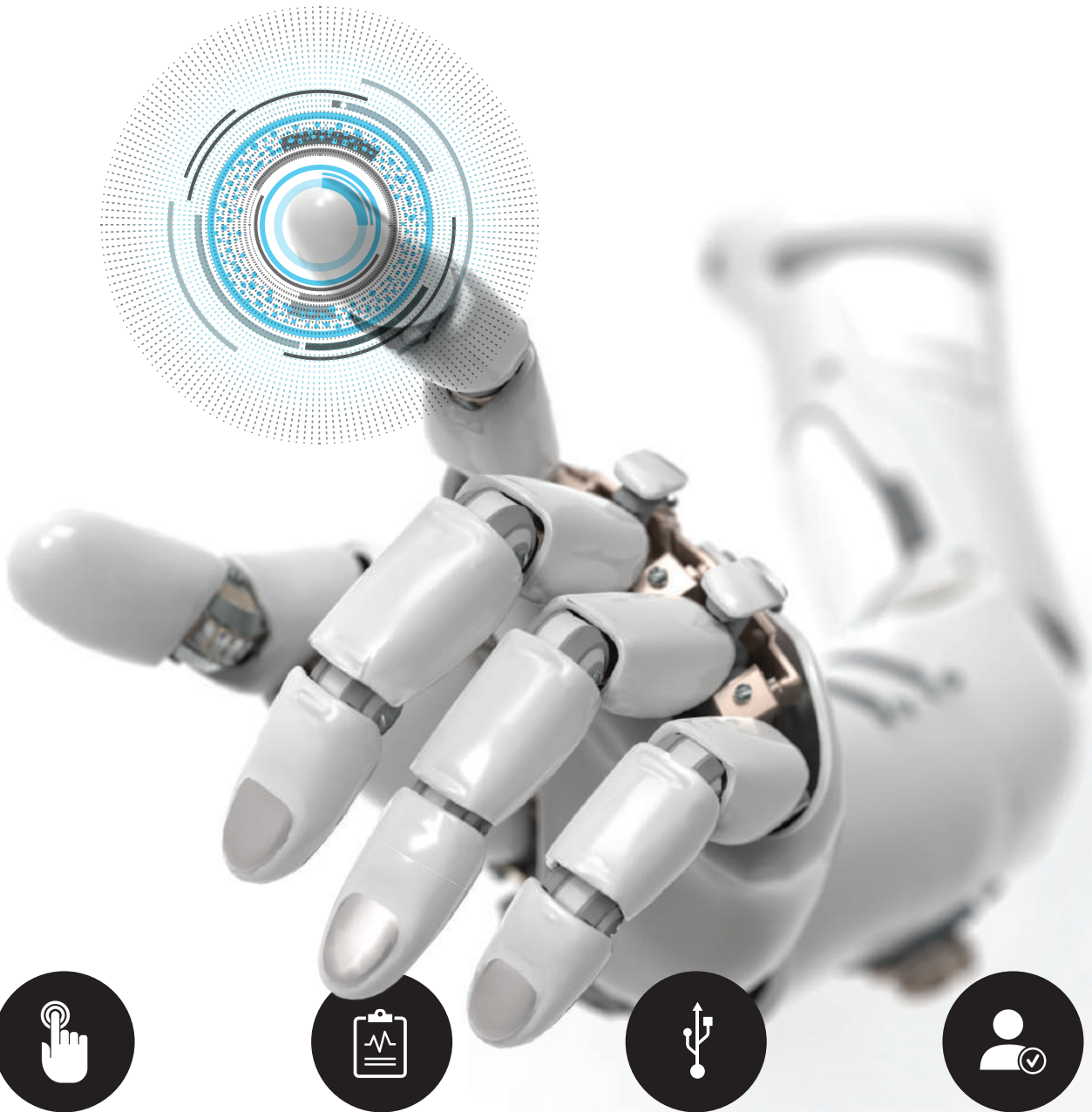
User-friendly, unique, embedded software complete with icon-based simple navigation, assay search functions and customisation of lists of your favourite test menu combinations



Switch between multiple languages available at your convenience

>> SUPERIOR PERFORMANCE

EMBRACING INNOVATION



Quality display on a large 7" high resolution LCD touch-screen responsive even when wearing lab gloves

Storage of up to 1,000 patient records, each holding:

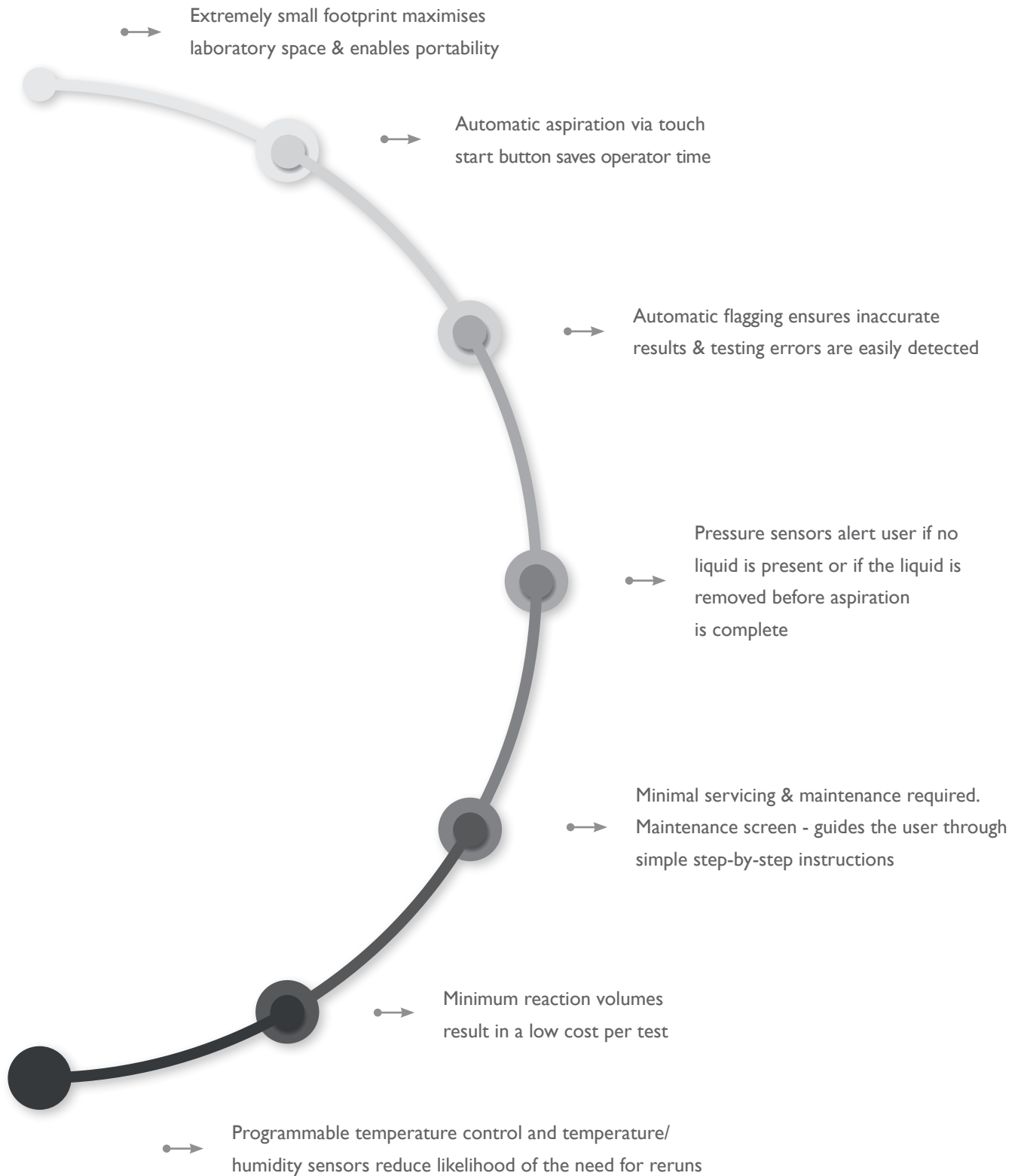
- 1,000 results
- 1,000 calibrator results
- 1,000 QC results

USB port for importing Randox-defined test menus and exporting patient, QC and calibration results

Designed to be exceptionally user-friendly. Minimal training is required to use the RX altona

» EFFICIENCY

BOLD DESIGN, UNRIVALED FUNCTIONALITY



>> FLEXIBILITY

DEVELOPED FOR THE FUTURE OF DIAGNOSTICS



Extensive dedicated RX series test menu validated for optimum use and the ability to perform clinical chemistry and coagulation testing on the same platform, make the RX altona perfect for a wide range of laboratories



Up to 10 wavelengths can be generated via solid state filter device (340-700nm standard with optional 280nm) giving the RX altona a wide range of testing abilities



Ability to run flow cell mode or cuvette mode



Users can import, build, edit and save up to 20 different test menus with 100 tests in each.

ORDERING INFORMATION

RX altona analyser	RX6015
RX altona analyser with optional on-board printer	RX6016
RX altona coagulation start-up kit	RX2908
RX altona cuvette incubator	

For more information contact your local representative, or email us at:

theRXseries@randox.com



» SPECIFICATIONS

PHYSICAL DIMENSION

Width	235mm
Depth	330mm
Height	305mm
Weight	6.5kg

PERFORMANCE CHARACTERISTICS

Analyser Type	Semi-automated, flow-cell based, primarily closed bench-top system with possibility to create open assays
Analysis Method	UV/Colourmetric (rate/endpoint), Turbidimetric Immunoassay, Chronometric (coagulation parameters)
Aspiration Volume	Programmable aspiration volume of 250-500uL
Assay Types	1-Point, 2-Point, Rate-A, 1-PT-S Blank, Absorbance, Wine Colour, Wine Hue
Calibration Principal	Linear, K-Factor, Spline, Point-to-Point, Log-logit, Storage of up to 1 calibration curve per method
Chemistry Parameters	User can import, build, edit and save up to 20 different test menus containing 100 tests each
Cuvettes	Flow cell (volume 18µl) mode or cuvette mode in plastic, quartz or glass Cuvette temperature controlled by dry block thermostat (optional)
Detection Principal	Multiple wavelength solid state filter device. 9 wavelengths 340-700nm (340, 420, 520, 546, 578, 600, 620, 660, and 700nm), or 10 wavelengths including optional 280nm
Error Sensors	Automatic flagging of inaccurate results/testing errors Humidity & Temperature sensors Pressure sensor alert if liquid absent or removed prior to completion of aspiration
Light Source	Halogen Tungsten Lamp (12V 20W) (estimated service life 2,000 hrs at 23°C ambient)
Maintenance Requirements	Minimal. Includes step-by-step icon-based on-screen instructions
Measurement Interval	2 to 999 sec
Operator Interface	Unique, embedded icon-based software available in multiple languages & password protected USB port for importing Randox-defined test menu, updating software and exporting patient, QC and calibration results

Open/Closed Channels	Open channels available
Quality Control	Advanced built-in QC software automatically displays reaction curves, calibration curves & Levey Jennings charts
Reaction Temperature	Programmable +20°C to +40°C steps in 1°C, +/- 0.5°C (room temperature)
Reaction Volume	450µl - 1,500µl
Sample Volume	5µl - 1,000µl
Relative Humidity Range	Indoor humidity: 80% up to +31°C , down to 50% at +40°C
Report Generation	Date, Time, Test Name, Test Type, Batch ID, Batch #, Test Menu, and Username
Sample Aspiration Mode	Automatic aspiration via water-proof capacitive touch-start button
Sample Types	Serum, Plasma, Urine, Wine, CSF
Storage Capacity	1,000 main records each holding 1,000 results, 1,000 calibration results and 1,000 QC results
Temperature Control	Heats to 37°C < 30 seconds & cools from 37°C to 25°C in < 1 minute

POWER & CONNECTIVITY

Display	7" high resolution LCD (RGB)(800x480) touch-sensitive screen (responsive to lab gloves)
Input Voltage	Universal Power Supply: 100 to 240 V RMS, at 50/60Hz
Power Consumption	130 W Max
System Connections	USB Port for importing and customising test menus as well as exporting results

OPTIONAL ACCESSORIES

Printer	Integrated thermal printer with full graphics facility
Cuvette Incubator	Incubation for 10 cuvettes before measurement
Coagulation Start-up Kit	Enables coagulation assays

ACCESSORIES

Accessories and Consumables	Aspiration tubing, peristaltic pump tubing, waste tubing, spare lamp, printer paper, cleaning cloth, Randox CellClean, USB pen
------------------------------------	--

»» TEST MENU



CLINICAL

AUTOIMMUNE: CRP IgA IgG	CRP Direct HDL Cholesterol Direct LDL Cholesterol Triglycerides	Cystatin C Direct HDL Cholesterol Direct LDL Cholesterol Glucose Glucose Hexokinase HbA1c/Hb Microalbumin NEFA Ranbut (Hydrobutyrate) Total Protein Triglycerides Urinary Protein	HEPATIC FUNCTION: Aldolase Albumin ALT AST (GOT) Bile Acids Bilirubin (Total/Direct) Cholinesterase IgA IgG Total Protein Transferrin	NUTRITIONAL STATUS: Albumin Iron Magnesium Potassium Transferrin Zinc
ANAEMIA: Iron G6P-DH Transferrin	COMPREHENSIVE METABOLIC PROFILE: Acid Phosphatase Albumin Alkaline Phosphatase ALT AST (GOT) Bilirubin (Total/Direct) Calcium Chloride CO ₂ Total Creatinine (Jaffe) Glucose Potassium Sodium Urea	ELECTROLYTES: Calcium Chloride CO ₂ Total Creatinine Glucose Potassium Sodium	LIPIDS: Apolipoprotein A-1 Apolipoprotein B Cholesterol Direct HDL Cholesterol Direct LDL Cholesterol Triglycerides	RENAL FUNCTION: Albumin Beta-2 Microglobulin Calcium Creatinine Cystatin C Glucose HbA1c/Hb IgG Microalbumin Potassium Sodium Phosphorus (Inorganic) Urinary Protein Urea Uric Acid
BASIC METABOLIC PROFILE: Calcium CO ₂ Total Chloride Creatinine (Jaffe) Glucose Potassium Sodium Urea	DIABETES: Cholesterol Creatinine	INFLAMMATION: Aldolase ASO CRP	NEONATAL SCREENING: CRP	
CARDIAC: Cholesterol CK-MB CK-NAC				



VETERINARY

Albumin Alkaline phosphatase ALT (GPT) Ammonia Amylase AST (GOT) Bile acids Bilirubin	Calcium Chloride Cholesterol Cholinesterase (Butyryl) CK-NAC CO ₂ Total Copper Creatinine	Gamma-GT GLDH Glucose Ransel (Glutathione peroxidase) Ranbut (Hydroxybutyrate) Iron Lactate	Lipase Magnesium NEFA (Non-esterified fatty acids) Phosphorus (Inorganic) Potassium Sodium	Ransod (Superoxide dismutase) Total Protein Urea Uric Acid Urinary protein
--	---	---	---	--



RESEARCH

ANTIOXIDANTS: Glutathione Reductase Ransel (Glutathione Peroxidase) Ransod (Superoxide Dismutase) Total Antioxidant Status	FOOD AND WINE TESTING: Acetic acid Ammonia Copper Ethanol Glucose/fructose	Lactic acid Malic acid NOPA Potassium TAS Total SO ₂
---	--	--



COAGULATION

Activated Partial Thrombin Time (APTT)
Antithrombin (ATIII)
Prothrombin Time (PT)
Thrombin Time (TT)



SPECIALITY TEST

Ethanol (DOA)
Acid Phosphatase



RX altona

Information correct at time of print.

Radox Laboratories Limited is a subsidiary of Radox Holdings Limited a company registered within Northern Ireland with company number N.I. 614690. VAT Registered Number: GB 151 6827 08. Product availability may vary from country to country. Please contact your local Radox representative for information. Products may be for Research Use Only and not for use in diagnostic procedures in the USA

RANDOX

International Headquarters

Randox Laboratories Limited, 55 Diamond Road, Crumlin, County Antrim, United Kingdom, BT29 4QY

T +44 (0) 28 9442 2413 F +44 (0) 28 9445 2912 E therxseries@randox.com | therxseries.com



Australia

Randox (Australia) Pty Ltd.
Tel: +61 (0) 2 9615 4640



Brazil

Randox Brasil Ltda.
Tel: +55 11 5181-2024



China

Randox Laboratories Ltd.
Tel: +86 021 6288 6240



Czech Republic

Randox Laboratories S.R.O.
Tel: +420 2 1115 1661



France

Laboratoires Randox
Tel: +33 (0) 130 18 96 80



Germany

Randox Laboratories GmbH
Tel: +49 (0) 215 1937 0611



Hong Kong

Randox Laboratories Hong Kong Limited
Tel: +852 3595 0515



Italy

Randox Laboratories Ltd.
Tel: +39 06 9896 8954



India

Randox Laboratories India Pvt Ltd.
Tel: +91 80 2802 5000



Poland

Randox Laboratories Polska Sp. z o.o.
Tel: +48 22 862 1080



Portugal

Irlindox Laboratorios Quimica Analitica Ltda
Tel: +351 22 589 8320



Puerto Rico

Clinical Diagnostics of Puerto Rico, LLC
Tel: +1 787 701 7000



Republic of Ireland

Randox Teoranta
Tel: +353 7495 22600



Slovakia

Randox S.R.O.
Tel: +421 2 6381 3324



South Africa

Randox Laboratories SA (Pty) Ltd.
Tel: +27 (0) 11 312 3590



South Korea

Randox Korea
Tel: +82 (0) 31 478 3121



Spain

Laboratorios Randox S.L.
Tel: +34 93 475 09 64



Switzerland

Randox Laboratories Ltd. (Switzerland)
Tel: +41 41 810 48 89



UAE

Randox Medical Equipments Trading LLC
Tel: +971 55 474 9075



USA

Randox Laboratories-US, Ltd.
Tel: +1 304 728 2890



Vietnam

Randox Laboratories Ltd, Vietnam
Tel: +84 (0) 8 3911 0904